

# Impact of the MTHFR C677T polymorphism on risk of neural tube defects: case-control study

Peadar N Kirke, James L Mills, Anne M Molloy, Lawrence C Brody, Valerie B O'Leary, Leslie Daly, Sharon Murray, Mary Conley, Philip D Mayne, Owen Smith, John M Scott

Homozygosity for the T allele of the C677T polymorphism of the gene encoding the folate dependent enzyme 5,10-methylenetetrahydrofolate reductase (MTHFR) is a risk factor for neural tube defects.<sup>1</sup> Both the homozygous (TT) and heterozygous (CT) genotypes are associated with lower tissue concentrations of folate, higher homocysteine concentrations, and lower enzyme activity than the wild type (CC) genotype; these effects are more marked in homozygotes. Low folate and raised homocysteine levels in early pregnancy are risk factors for neural tube defects.<sup>2</sup> We investigated the possibility that the CT genotype would also increase the risk of these malformations.

## Participants, methods, and results

We recruited 397 individuals with spina bifida aperta (380) or encephalocele (17) throughout Ireland. Participants were aged between 5 months and 52 years (mean 16.8 years). We drew blood for analysis of DNA. We derived the controls from a random sample of 1000 newborn screening cards collected on all Irish births. Of these 1000, DNA was successfully extracted from 855 cards. We successfully genotyped 395 (99.5%) cases and 848 (99.2%) controls.

We calculated population attributable fractions, broadly interpreted as the percentage of the disease in a population that is "caused by" a risk factor, for heterozygotes and homozygotes separately comparing each to the wild type.

The heterozygous genotype is associated with an increased risk of neural tube defects (odds ratio 1.52;  $P=0.0015$ ; table). Risk is also raised for the homozygous TT genotype (2.56;  $P<0.0001$ ), confirming our earlier finding.<sup>3</sup>

Population attributable fraction calculations reveal that the CT genotype is responsible for at least as many neural tube defects in the population as the TT genotype (14.9% *v* 11.3%; table). This arises because a much greater proportion of the population are heterozygous for this allele (about 38% of the general population are CT compared with 10% who are TT; table).

## Comment

Heterozygosity for the MTHFR polymorphism, which is present in 38% of the population, increases the risk

of neural tube defects. Most studies of MTHFR C677T and neural tube defects and other conditions have focused on the risk associated with T allele homozygosity. The possibility that heterozygosity might also increase neural tube defect risk has gone unrecognised except for a small study in which an association between CT and these malformations was thought to be due to the higher than expected proportion of CC control subjects.<sup>4</sup>

The combined CT and TT genotypes account for about 26% of neural tube defects in Ireland. Folate or folic acid is estimated to be involved in about 50% to 70% of these defects. Thus up to a half of the folate related neural tube defects may be explained by this single genetic variant.

These findings have two important implications. Firstly, MTHFR C677T heterozygosity needs to be considered as a risk factor for other conditions where homozygosity has been shown to be associated with increased risk, for example, ischaemic heart disease.<sup>5</sup> Secondly, the population at risk, and the population that will benefit from food fortification, is much larger than previously believed. Based on pooled data from published studies, about 59% of the European population and 53% of the North American population have either CT or TT genotypes.<sup>1</sup>

Both the lower folate and increased homocysteine concentrations associated with CT and TT genotypes can be corrected by folic acid, even in relatively small doses. Therefore, our study provides new data underscoring the importance of public health intervention programmes of folic acid supplementation and food fortification targeted at all women of childbearing age to prevent neural tube defects. Such intervention may also turn out to have other public health benefits—for example, in the prevention of cardiovascular disease.

We thank Deborah Watson, Marie Sutton, Maeve Royston, Helen Burke, and Mary-Patricia McKeever for subject recruitment and data collection and the Irish Association for Spina Bifida and Hydrocephalus for their help with subject recruitment.

Contributors: PNK, JLM, AMM, LCB, LD, MC, and JMS designed the study, analysed and interpreted the data, and

This article was posted on *bmj.com* on 21 May 2004: <http://bmj.com/cgi/doi/10.1136/bmj.38036.646030.EE>

Child Health  
Epidemiology  
Division, Health  
Research Board,  
Dublin 2, Ireland

Peadar N Kirke  
*specialist in public  
health medicine*  
Sharon Murray  
*research coordinator*

Division of  
Epidemiology,  
Statistics and  
Prevention  
Research, National  
Institute of Child  
Health and Human  
Development,  
National Institutes  
of Health, Bethesda,  
MA 20892, USA  
James L Mills  
*chief, pediatric  
epidemiology section*  
Mary Conley  
*information  
technology specialist*

Department of  
Clinical Medicine,  
Trinity College  
Dublin, St James's  
Hospital, Dublin 8  
Anne M Molloy  
*senior experimental  
officer*

Molecular  
Pathogenesis  
Section, Genome  
Technology Branch,  
National Human  
Genome Research  
Institute, National  
Institutes of Health  
Lawrence C Brody  
*senior investigator*

Department of  
Biochemistry,  
Trinity College  
Dublin, Dublin 2  
Valerie B O'Leary  
*postdoctoral geneticist*  
John M Scott  
*professor of  
experimental  
nutrition*

Department of  
Public Health  
Medicine and  
Epidemiology,  
University College  
Dublin, National  
University of  
Ireland, Dublin 2  
Leslie Daly  
*associate professor*

The Children's  
University Hospital,  
Dublin 1  
Philip D Mayne  
*consultant chemical  
pathologist*

continued over

BMJ 2004;328:1535-6

Risk of neural tube defect by the 5,10-methylenetetrahydrofolate reductase C677T genotype

| Genotype          | No of cases (%) | No of controls (%) | Odds ratio (95% CI) | P value | Population attributable fraction % (95% CI) |
|-------------------|-----------------|--------------------|---------------------|---------|---|
| CC (wild type)    | 151 (38.2)      | 439 (51.8)         | 1.00                | —       | —   |
| CT (heterozygous) | 171 (43.3)      | 326 (38.4)         | 1.52 (1.16 to 2.00) | 0.0015  | 14.9 (6.1 to 23.7)                          |
| TT (homozygous)   | 73 (18.5)       | 83 (9.8)           | 2.56 (1.75 to 3.74) | <0.0001 | 11.3 (6.7 to 15.8)                          |
| CT or TT          | 244 (61.8)      | 409 (48.2)         | 1.73 (1.40 to 2.14) | <0.0001 | 26.2 (15.7 to 36.6)                         |
| Total             | 395 (100)       | 848 (100)          | —                   | —       | —   |

National Centre for Hereditary Coagulation Disorders, St James's Hospital, Dublin 8

Owen Smith  
consultant  
haematologist

Correspondence to:  
P N Kirke  
pkirke@hrb.ie

drafted the report. VBO'L, AMM, LCB, and OS did the genotyping. PNK and SM recruited some of the cases and PDM provided the Guthrie cards for the controls. LD did the statistical analysis. All authors contributed to writing revisions of the report and approved the final manuscript. PNK is guarantor.

Funding: National Institute of Child Health and Human Development, National Institutes of Health (Contract No. NOIHD 23163) and the Health Research Board of Ireland.

Competing interests: None declared.

Ethical approval: Research Ethics Committee of the Health Research Board. We got written informed consent from all participants.

- 1 Botto LD, Yang Q. 5,10-methylenetetrahydrofolate reductase gene variants and congenital anomalies: a HuGE review. *Am J Epidemiol* 2000;151:862-77.

- 2 Mills JL, McPartlin JM, Kirke PN, Lee YJ, Conley MR, Weir DG, et al. Homocysteine metabolism in pregnancies complicated by neural-tube defects. *Lancet* 1995;345:149-51.
- 3 Shields DC, Kirke PN, Mills JL, Ramsbottom D, Molloy AM, Burke H, et al. The "thermolabile" variant of methylenetetrahydrofolate reductase and neural tube defects: an evaluation of genetic risk and the relative importance of the genotypes of the embryo and the mother. *Am J Hum Genet* 1999;64:1045-55.
- 4 Johanning GL, Tamura T, Johnston KE, Wenstrom, KD. Comorbidity of 5,10-methylenetetrahydrofolate reductase and methionine synthase gene polymorphisms and risk for neural tube defects. *J Med Genet* 2000;37:949-51.
- 5 Wald DS, Law M, Morris JK. Homocysteine and cardiovascular disease: evidence on causality from a meta-analysis. *BMJ* 2002;325:1202-8.

(Accepted 3 February 2004)

doi 10.1136/bmj.38036.646030.EE

## Delays in publication of cost utility analyses conducted alongside clinical trials: registry analysis

Dan Greenberg, Allison B Rosen, Natalia V Olchanski, Patricia W Stone, John Nadai, Peter J Neumann

Harvard Center for Risk Analysis, Department of Health Policy and Management, Harvard School of Public Health, 718 Huntington Avenue, Boston, MA 02115, USA  
Dan Greenberg  
visiting scientist  
Natalia V Olchanski  
research assistant  
Peter J Neumann  
associate professor of policy and decision sciences

Division of General Medicine and Primary Care, Beth Israel Deaconess Medical Center, 330 Brookline Avenue, Rose 130, Boston  
Allison B Rosen  
AHRQ health services research fellow

Columbia University, 617 West 168th Street, New York, NY 10032, USA  
Patricia W Stone  
assistant professor of nursing

continued over

BMJ 2004;328:1536-7

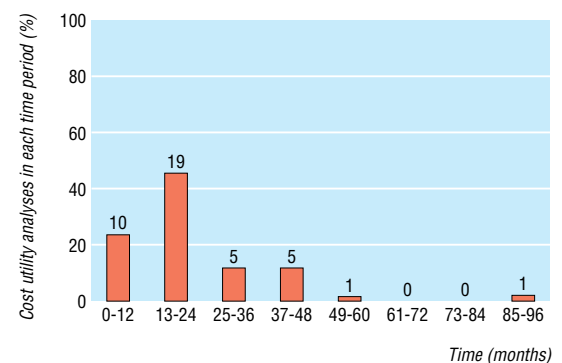
Economic evaluations conducted alongside randomised controlled trials enable analysis of detailed, patient level data on efficacy, cost, and quality of life in a controlled setting. They can provide timely and reliable assessments of value for money, to inform decisions on coverage and reimbursement.<sup>1-3</sup>

The *BMJ* recently decided to consider trial based economic evaluations for publication only if the clinical results are submitted to the journal as well.<sup>4</sup> We assessed the extent to which cost utility analyses are conducted alongside trials, estimated the time lag between the publication of trials' clinical and economic results, and compared the characteristics of journals publishing the clinical trial data and the cost utility analyses.

### Methods and results

We conducted a systematic search for original English language cost utility analyses published in 1976-2001 by using Medline and other electronic databases. Two readers independently reviewed each study and came to a consensus on whether the analysis was conducted alongside a trial (data on both efficacy and resource use from the trial were used for the analysis). We identified the journal and publication date for each cost utility analysis and the corresponding trial. To assess the study's potential readership and dissemination we used paired sample *t* tests to compare the mean impact factors of journals in which studies were published and the extent to which publications were subsequently cited by other authors.

Of 533 cost utility analyses identified, 45 (8%) were trial based economic evaluations and covered a variety of clinical areas, particularly cardiovascular disease, cancer, and psychiatry (a full list of studies is available at [www.hsph.harvard.edu/cearegistry](http://www.hsph.harvard.edu/cearegistry)). We could not determine the lag in publication between the trial and the economic evaluation for four studies, for which a specific trial could not be identified or trial results were



Time from publication of trial's clinical results to publication of economic results (n=41), showing number in each time period. More than 75% of cost utility analyses were published one year or more after publication of the trial's clinical results

published only in abstract form. In cases where the clinical trial results and economic evaluation were reported in the same article or in the same issue of the journal (n = 7), we assumed no lag.

On average, cost utility analyses were published almost two years after the publication of the corresponding trial (mean (SD) 1.8 (1.4) years; range 0-7.5 years) (figure). Journal impact factors were higher for trials than for cost utility analyses (11.0 *v* 4.9; *t* = -3.951 (df = 28); 95% confidence interval for the difference -9.25 to -2.93; *P* < 0.001). The mean number of citations per year (total number of citations divided by number of years since the study was published) was also higher for clinical trials than for the economic evaluations (27.4 *v* 3.4; *t* = -3.197 (df = 30); 95% confidence interval for the difference -39.24 to -8.64; *P* = 0.003).

This article was posted on [bmj.com](http://bmj.com) on 20 April 2004: <http://bmj.com/cgi/doi/10.1136/bmj.38079.502326.AE>